

South Central Library System

Financial Overview



[COVID-19 \(Coronavirus\) resources available for libraries](#)

Support digital library collections: [Donate now](#) to build our OverDrive Advantage collection



Help Measure Residential Internet Speeds in Your Community

DPI is committed to improving digital equity in the state of Wisconsin. This year, they're collecting data about internet speeds across the state. They need your help!

Find Libraries & Materials

[Find a Library](#)

Library Catalogs

- [LINKcat](#)
- [Albertson Memorial Library \(Albany\)](#)
- [Everett Roehl Marshfield Public Library](#)
- [Pittsville Community Library](#)
- [Rio Community Library](#)
- [Lester Public Library of Vesper](#)
- [WorldCat \(World-wide catalog\)](#)

[Online Resources](#)

[Speak Up for Your Library](#)



South Central Library System

Helping Libraries Serve the Public

- Member Resources & Services
- Calendar & News
- Find a Library
- About SCLS
- Contact
- Committees & Governance
- Delivery

Home

Search

About SCLS

Member Libraries

- [Directory of public libraries](#)
- [Map of SCLS libraries](#)
- [Detailed Directory of public libraries](#) (SCLS member libraries only) • [SCLS feedback form](#)
- [Email directory](#) (SCLS member libraries only)

Organization

- [Boards and committees](#)
- [Plans and reports](#)
- [Organizational chart \(PDF\)](#)
- [Employment](#)
- [Member Library Agreements & Policies & Budgets](#)

Locations & Staff

- [Contact info & maps](#)
- [Staff list](#)

Publications

- [Online Update](#)
- [Trustee Update](#)
- [Email lists](#)

General Information

- [What does South Central provide to its Member Libraries?](#)
- [SCLS Services to Member Libraries](#)
- [SCLS Mission & Principles](#)
- [SCLS Quality Standards](#)
- [Library Responsibilities](#)
- [Sources of Library Funding](#)
- [History of the South Central Library System](#)
- [SCLS Legislative Contacts](#)
- [Terms and Acronyms](#)
- [SCLS 100 Year Plan](#)

About SCLS

[Contact Info and Maps](#)

[Employment Opportunities](#)

[Library Responsibilities](#)

[Map & Directions to SCLS Headquarters](#)

[Map of SCLS Libraries](#)

[Member Libraries](#)

[Member Library Agreements, Policies, Budgets, & Fees](#)

[Plans & Reports](#)

[SCLS History](#)

[SCLS Mission Statement and Principles](#)

[Terms and Acronyms](#)



Member Library Agreements, Policies, Budgets, & Fees

Agreements

- SCLS Membership Agreement
- Agreement to Participate in SCLS Technology Services 2019 (PDF)
- Supplementary Services Agreement 2020
- Statutory Resource Services Agreement 2020
- 2020 Cataloging Contract
- South Central In Demand (SCID)
- WPLC Digital Media Buying Pool
- Lending Agreement between SCLS LINKcat Libraries and SCLS Non-LINKcat Libraries
- 2016 Cost Formula for Shared Technology Services

General Policies

- Cooperation Policy
- Reconsideration Policy

Budgets

- 2020 Budget
- 2020 Budget Notes
- 2019 mid-year Budget
- 2019 mid-year Budget Notes

Technology Policies

- Hardware and Software Support Policy (PDF)
- Network Policy (PDF)

ILS Policies

- ILS Policies

Projected Fees

About SCLS

Contact Info and Maps

Employment Opportunities

Library Responsibilities

Map & Directions to SCLS Headquarters

Map of SCLS Libraries

Member Libraries

Member Library Agreements, Policies, Budgets, & Fees

Plans & Reports

SCLS History

SCLS Mission Statement and Principles

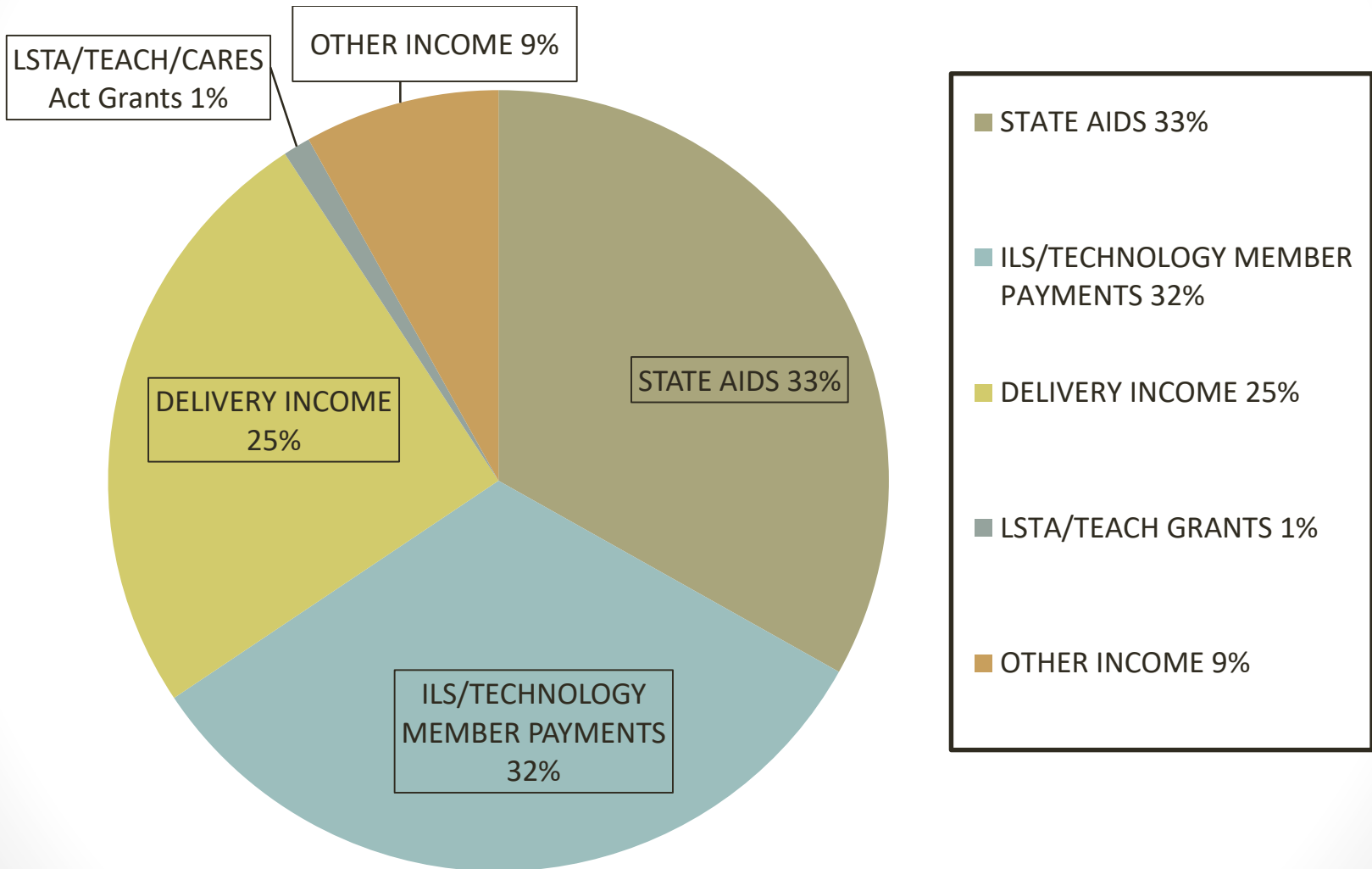
Terms and Acronyms

Factors in Budget Development

When developing a budget for the System, many factors are taken into account, to include:

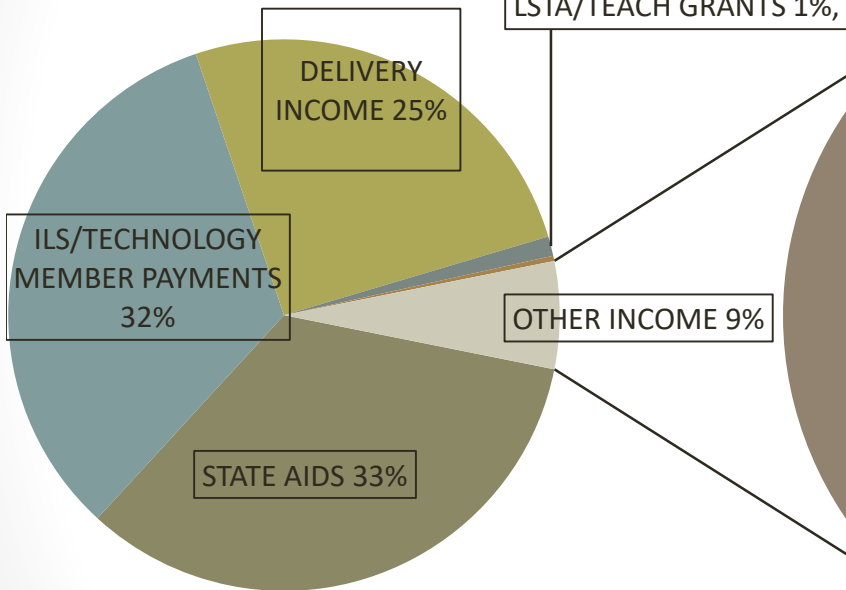
- Member needs and priorities
- Individual department budgets and resources
- Financial challenges
- New opportunities
- Statutory requirements

System Income

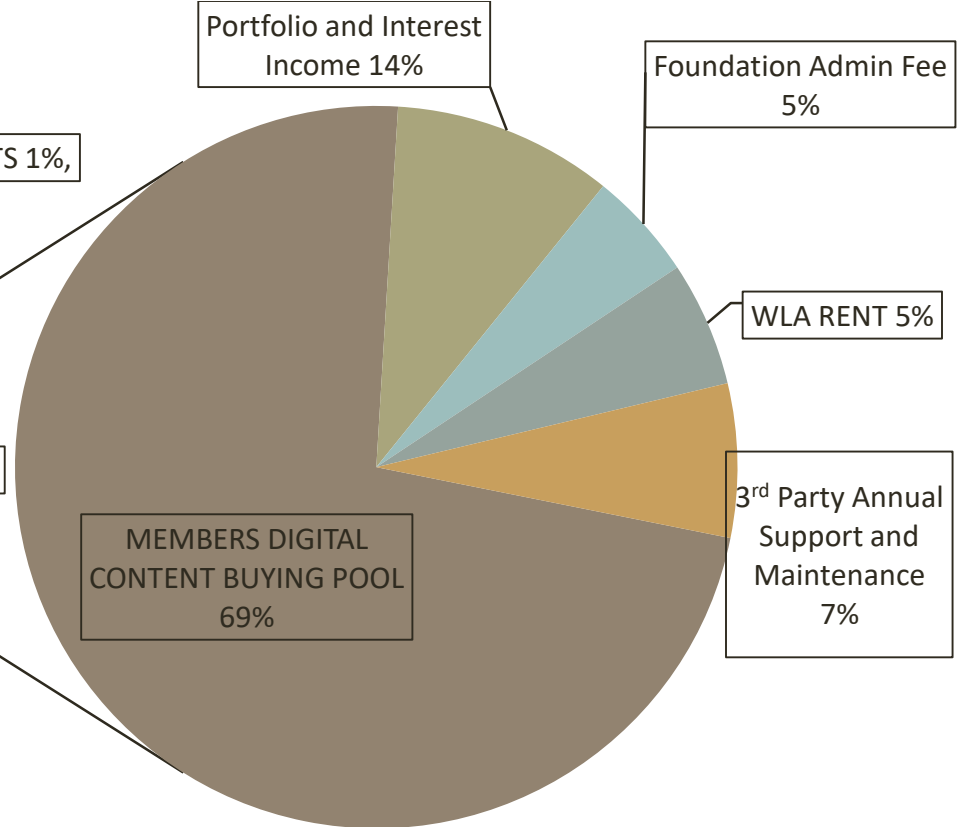


Other Income Sources

Total SCLS Budget



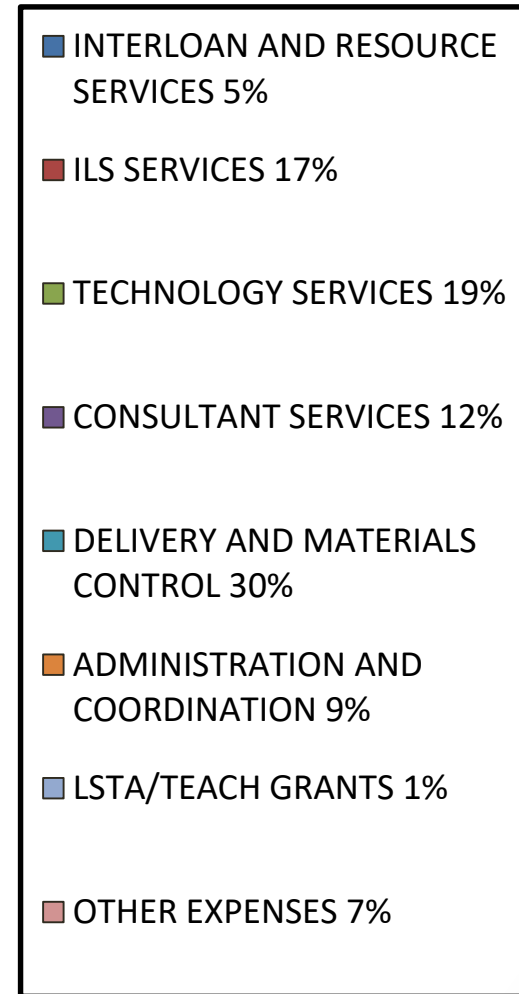
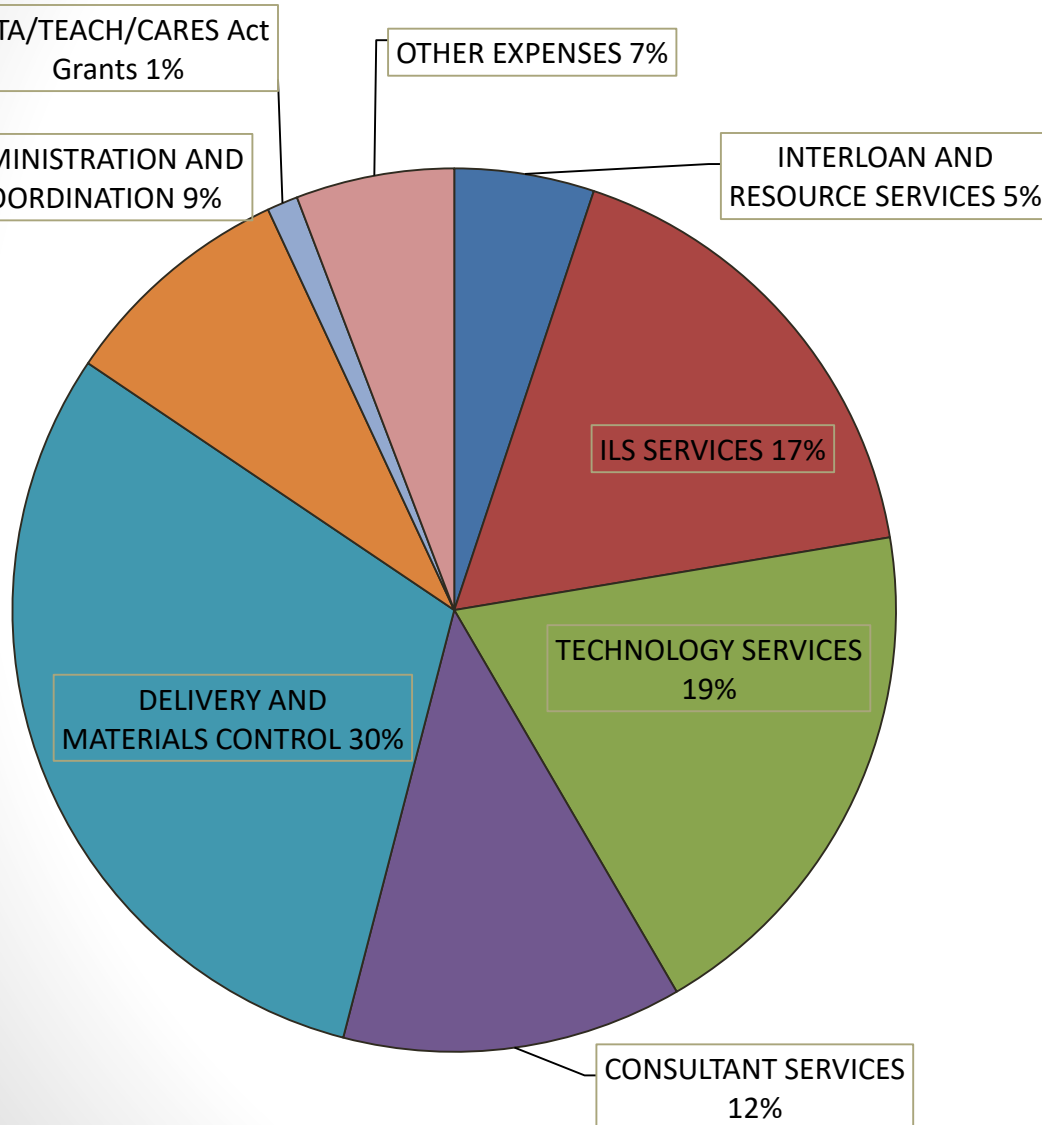
Other Income Budget



Carry Over Funds

- **General/Delivery Fund:**
 - Enough funds must stay in fund to satisfy SCLS liabilities, contractual obligations and unemployment self-insurance.
 - The balance is available to fund projects, purchase materials/equipment, finance system/county consolidation efforts or any other use deemed appropriate by SCLS or the Board of Trustees to be of member or system benefit.
- **Technology Fund:**
 - This fund is maintained and used for planned technology equipment replacement.
 - Statewide back-up collaboration.
- **ILS Fund:**
 - This fund is used for planned ILS development.

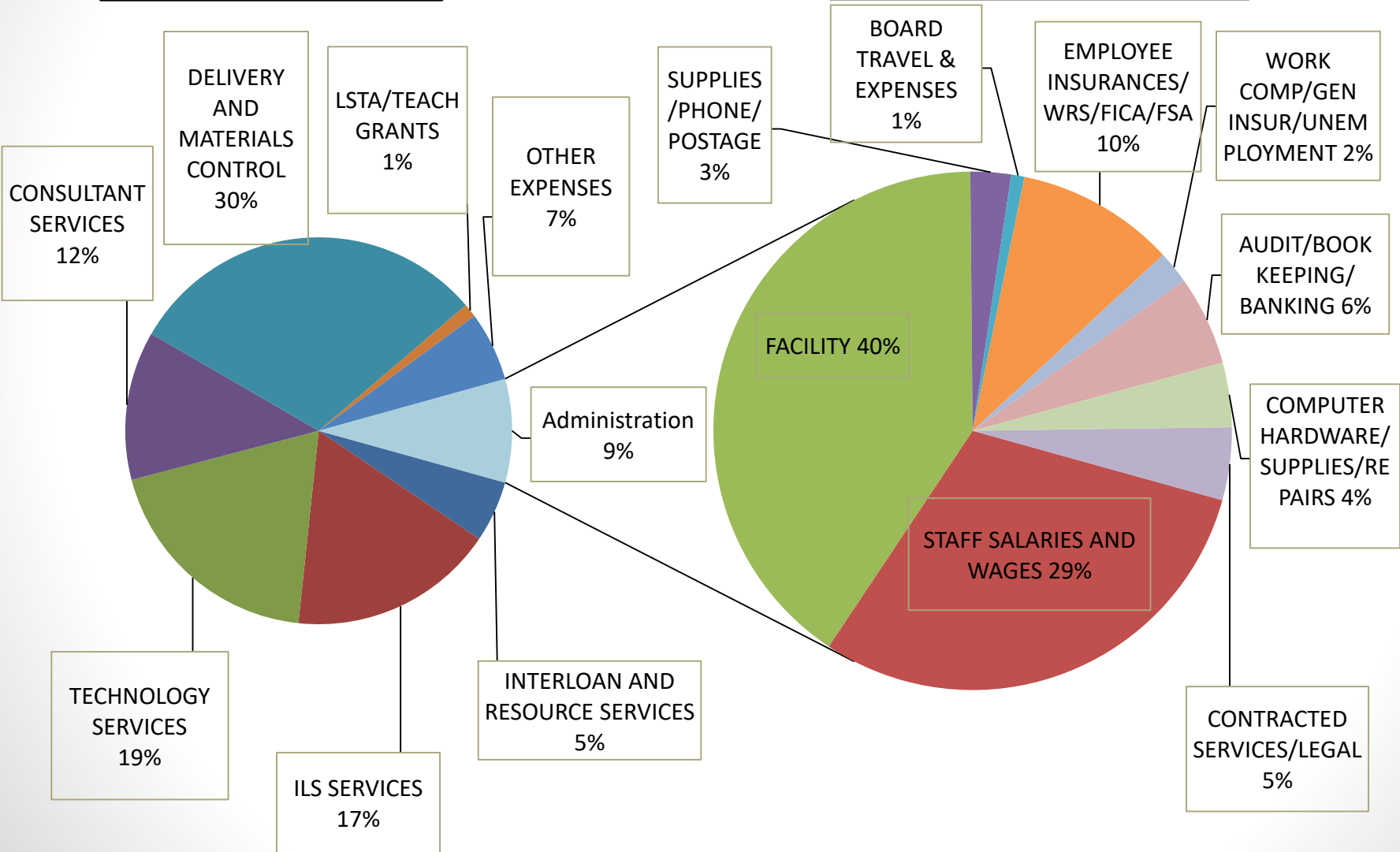
System Expenditures



Administration Expenses

Total SCLS Budget

Administration Budget



Questions?

Please feel free to contact
Martha Van Pelt or
Kerrie Goeden.

Martha Van Pelt
System Director
608-246-7975
mvanpelt@scls.info

Kerrie Goeden
HR & Finance Coordinator
608-246-7972
kgoeden@scls.info