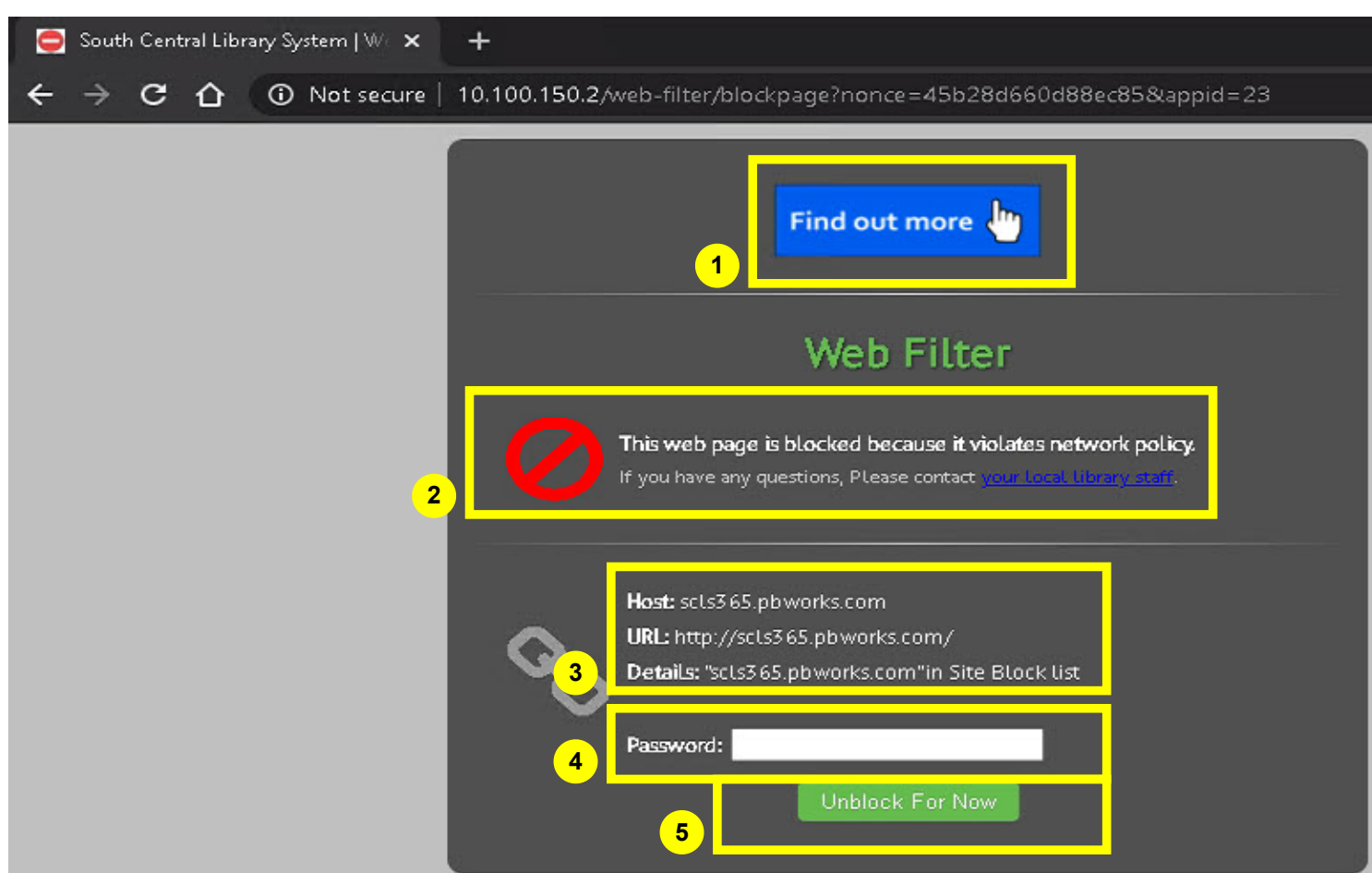


# SCLS Filtering Block Pages

## Standard Block Page



### 1. Find out more Button

This button is a link to an SCLS page containing information about web filtering. The page includes links to libraries' internet use policies, information about the bypass feature, and the ability to report an overblocked site via the embedded form.

### 2. Block Notice

The section informs the patron that the content they are attempting to view is being filtered and blocked. A subsection informs the patron to contact their local library staffperson for more information.

### 3. Detail

The section provides further detailed information about the site being blocked. This contains the website URL and details why the site is blocked. In this example the site being blocked was added to the Site Block list. During regular operation, the "Details" section will contain the category definition (for instance Pornography).

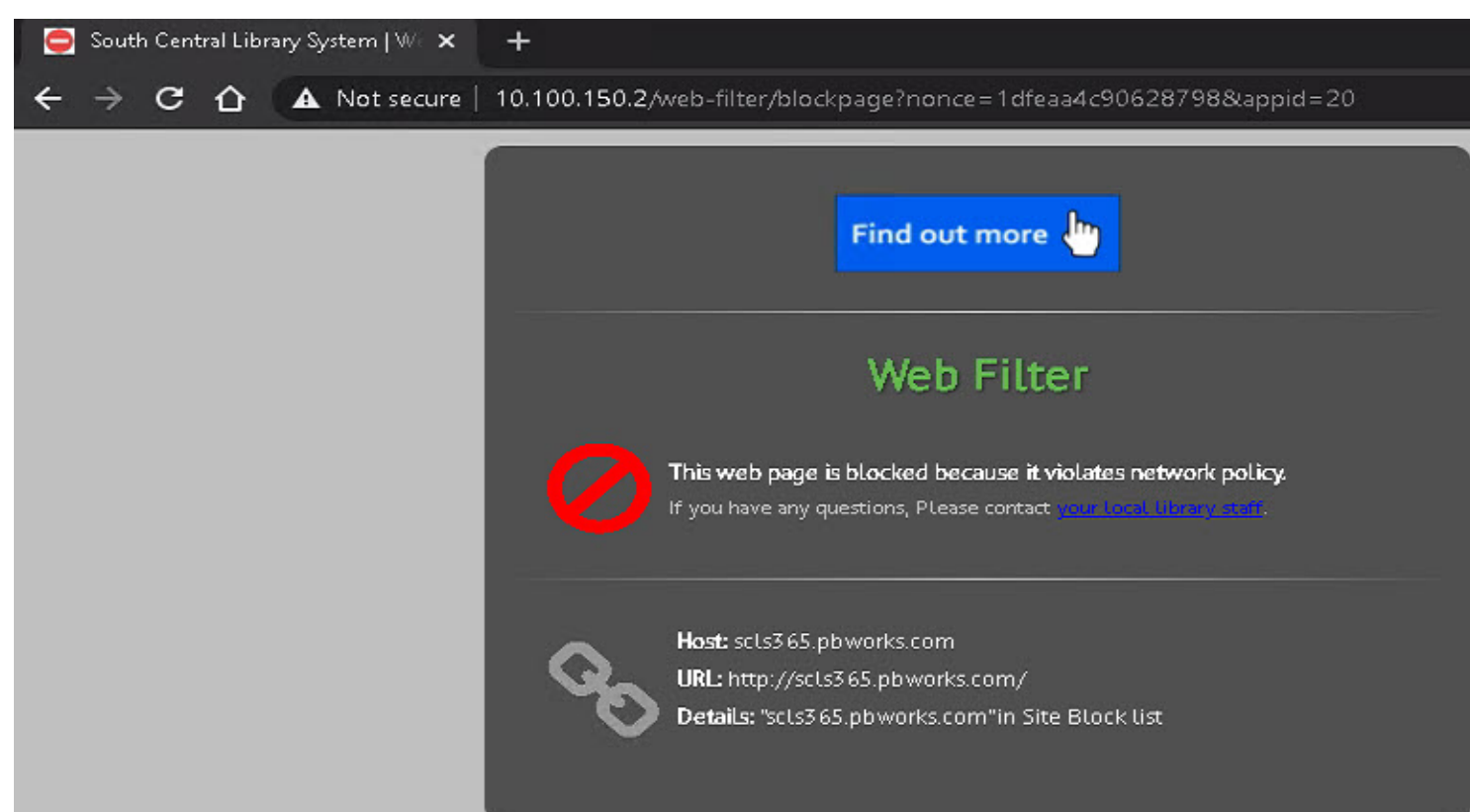
### 4. Bypass Password Input

Patrons may request the bypass password from their local library staff. With this password, they will enter the password in the password field and click the "Unblock For Now" button located under the password field.

### 5. Unblock Button

After a patron has entered the bypass password into the password field, they will then click the "Unblock For Now" button. If the password is correct, they will move onto the content that was initially blocked.

## No Bypass Block Page



The No Bypass block page is similar to the standard block page but does not contain the ability to bypass the filter and continue to blocked content. This option is for select PCs like Children's Use only computers.